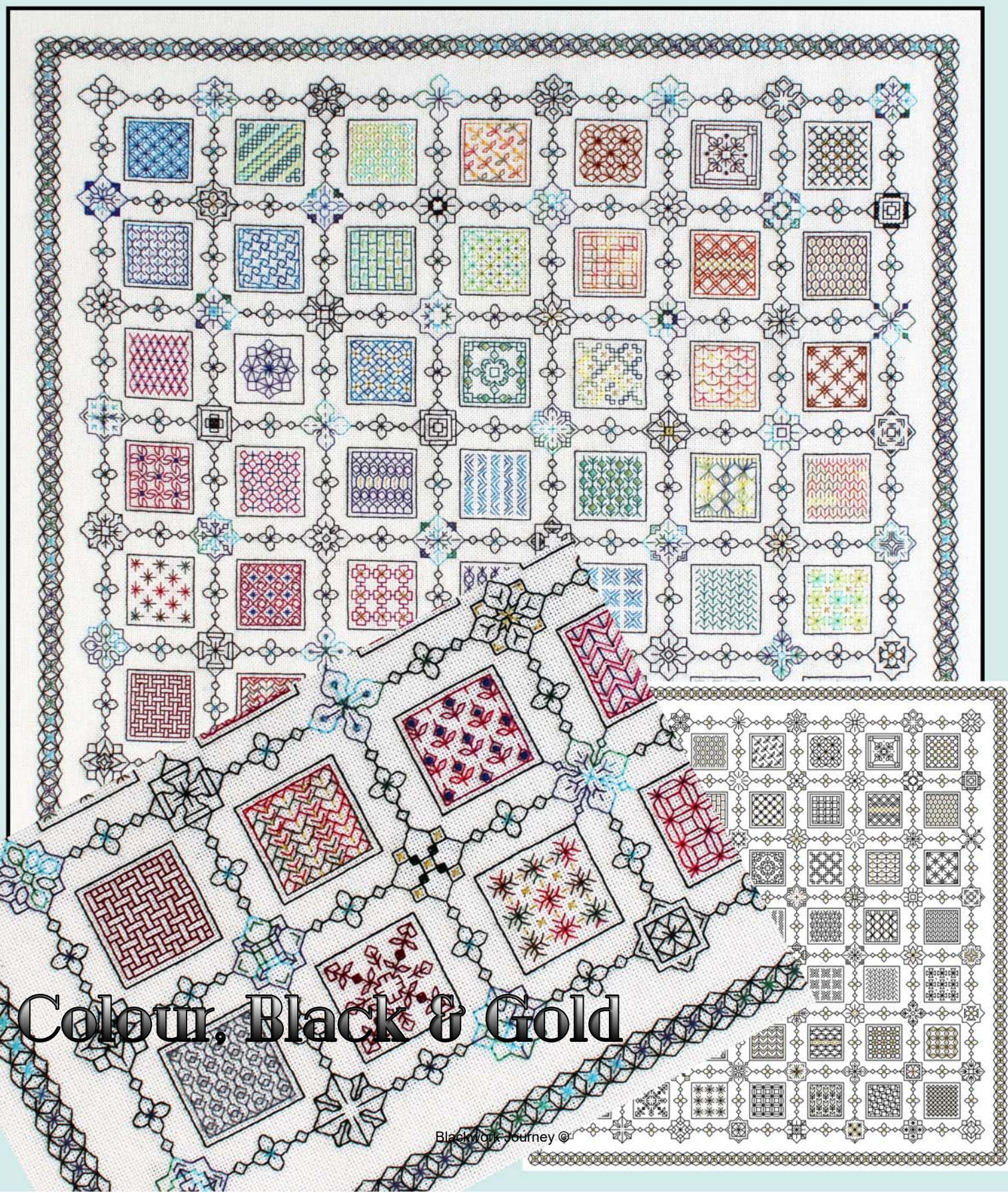


# 'TINY TREASURES'

## Square - Parts 9 - 10



Colour, Black & Gold

## 'Tiny Treasures' Square Design Parts 9 and 10

Design area: 15.29 x 15.29 inches

Stitches: 214 x 214

### Material:

Zweigart 28 count evenweave or 14 count Aida, 22 x 22 inches

If 25 count Lugana is used: 24 x 24 inches

### Stitches used:

Back stitch, one strand of floss

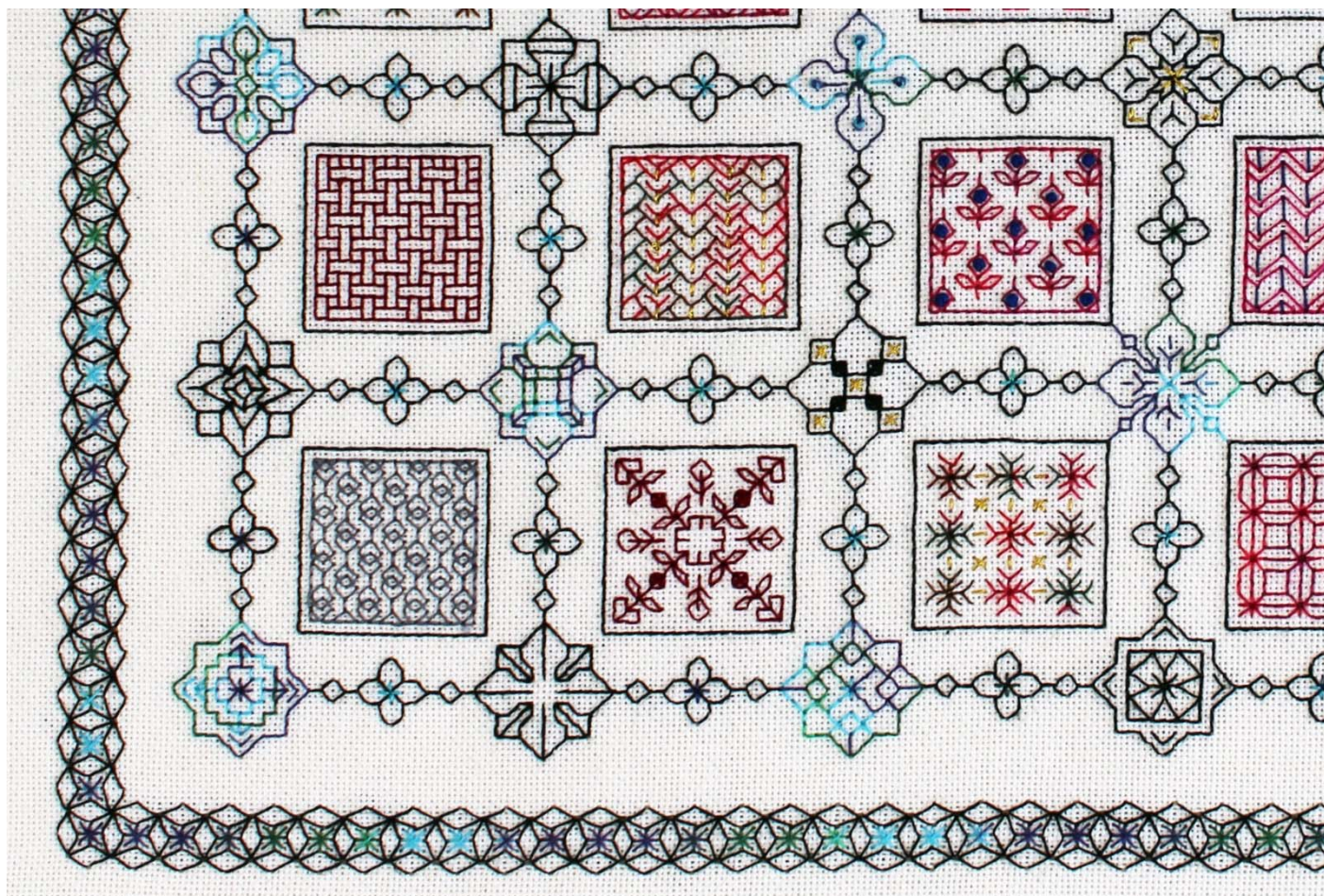
Cross stitch two strands of floss

Evenweave: stitches are worked over 2 threads unless the pattern indicates otherwise.

Cross stitch: stitches are worked over two threads or one block unless the pattern indicates otherwise.

### 1. Work Parts 9 and 10 as follows:

Finish off any patterns from previous parts. Add beads after the whole embroidery has been completed. The final parts will be added next month.

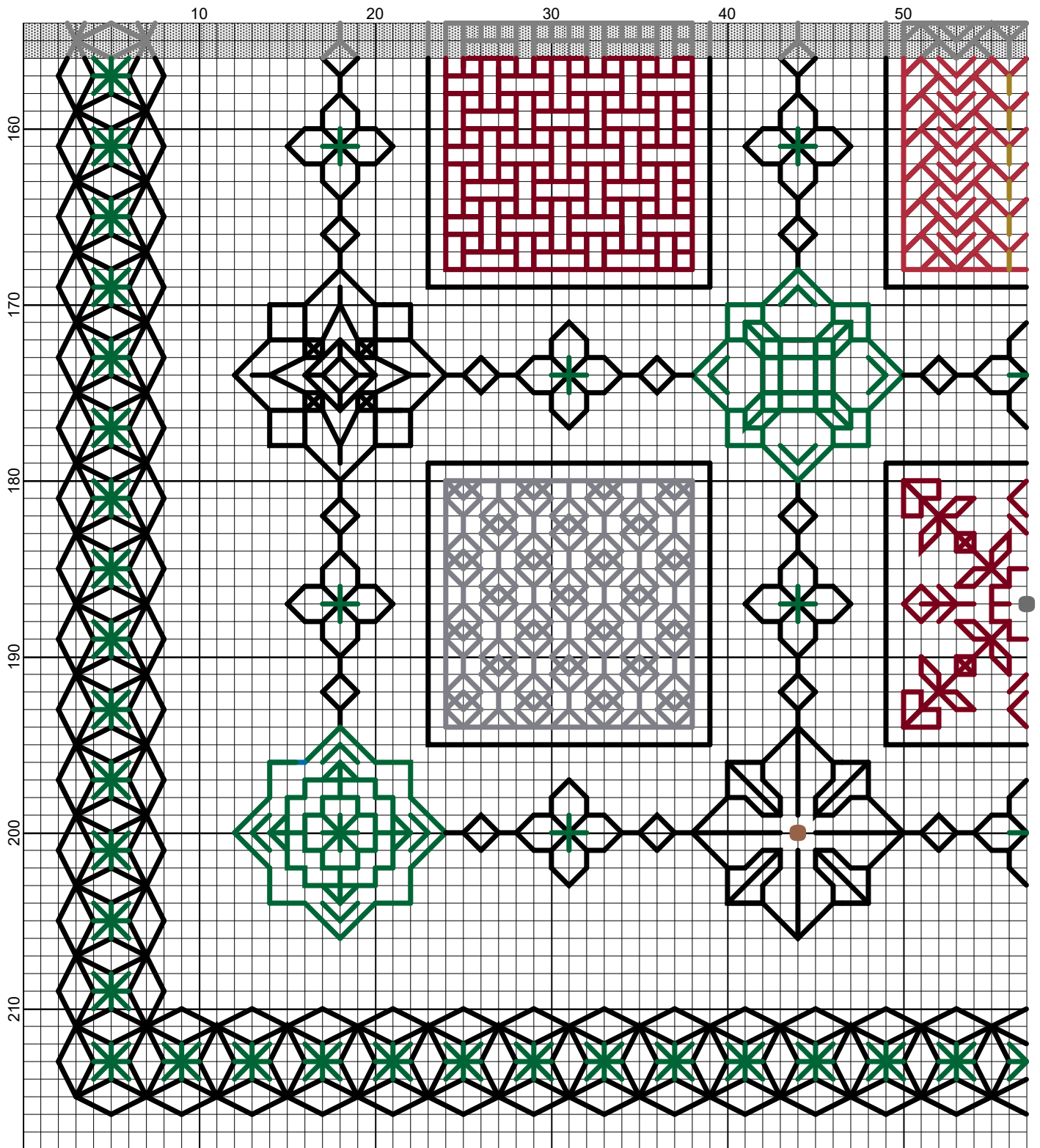


*Parts 9 and 10 Extract from Square design Embroidery*

Your design is almost complete. I hope you have enjoyed reading the information and working the design.

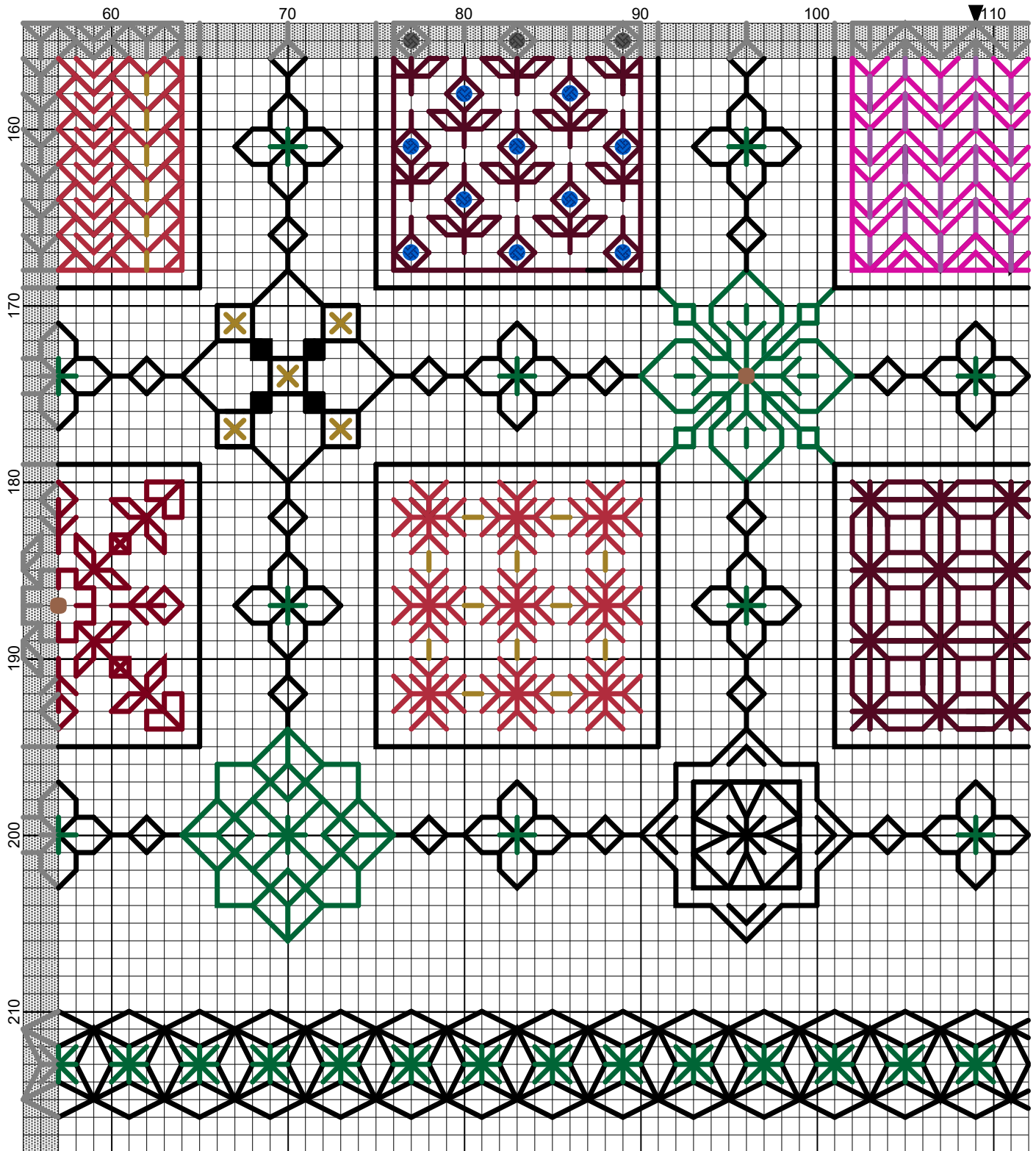
If you have any queries please contact: [lizalmond@blackworkjourney.co.uk](mailto:lizalmond@blackworkjourney.co.uk)

Tiny Treasures Square

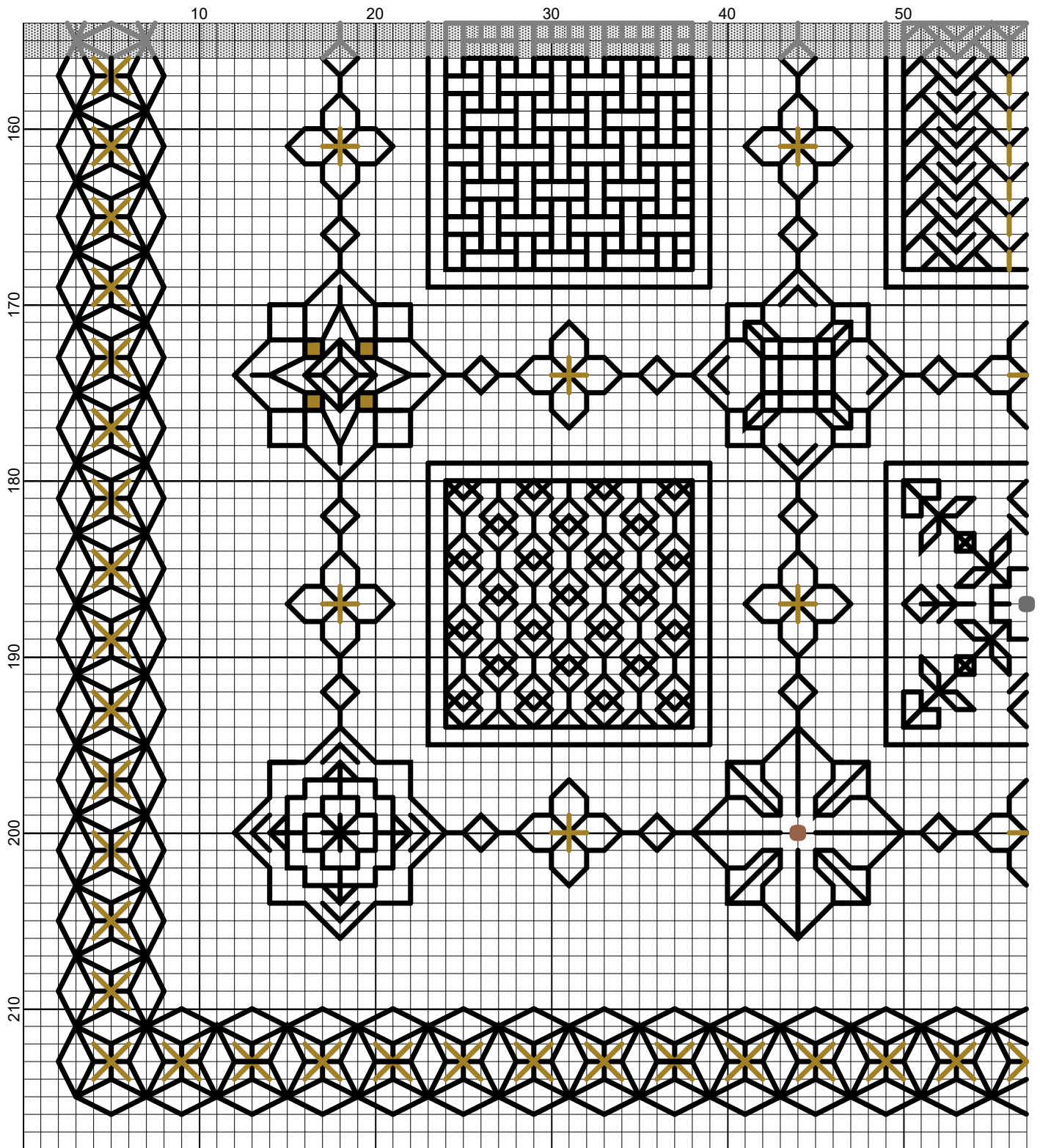


Elizabeth Almond

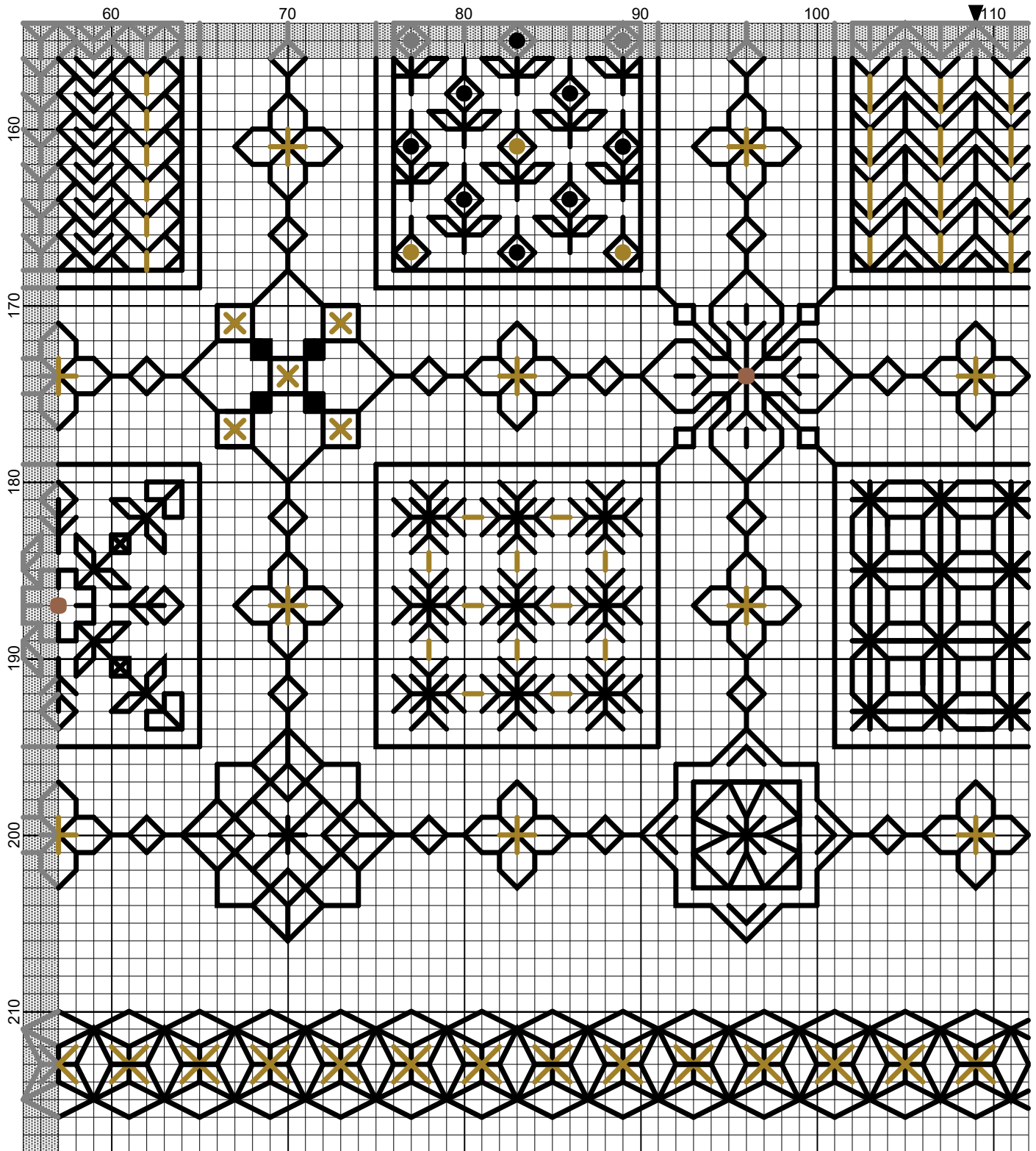
Tiny Treasures Square



Elizabeth Almond



Elizabeth Almond



Elizabeth Almond